



// EUROPRESS UMWELTECHNIK GMBH

CONVEYOR TECHNOLOGY

Good technology is benefits



// EUROPRESS UMWELTECHNIK

Conveyor technology for solving demanding tasks

We produce matching conveyor solutions that combine a stable build with time-saving installation. Thanks to their efficiency and adaptability, our conveyor belts ensure the performance of the respective pressing plant and enable optimum interaction.



Good technology is benefits

Local situation, specific target requirements of a project and the general properties of the material to be transported determine suitable conveyor technology. Accordingly, we have distinguished high diversity, flexibility and a good connection to our customers in this existing area for many years.

CHOOSING THE RIGHT SOLUTION

Our solutions in conveyor technology comprise chain belt conveyors, sliding belt conveyors, steel-plate conveyors and through belt conveyors. We provide detailed and customised advice to our

customers on the options of bulk material transport and consider all requirements of a project.

Standard conveyor belts Effective widths from 400 - 2800 mm	Sliding belt conveyors Effective widths from 300 - 2800 mm	Chain belt conveyors Effective widths from 600 - 2800 mm	STEEL-PLATE CONVEYORS Effective widths from 600 - 2800 mm
<ul style="list-style-type: none"> Robustly designed standard conveyor belts, which are suitable for many applications Belt supporting structure rolling, slightly throughed <p>Other advantages:</p> <ul style="list-style-type: none"> Modular design of the belt body Component connections which can be bolted High torsional rigidity Easy replacement of the load-bearing rollers RAL-paint according to customer requirements 	<ul style="list-style-type: none"> Flexible sliding belt conveyors for a variety of usages in the recycling and paper industry Completely slidable belt supporting structure or alternatively equipped with additional fan rollers <p>Other advantages:</p> <ul style="list-style-type: none"> Very stable, modular expandable belt frame with bolted connections, drive and return pulley Mounted using a housing flange bearing The shaft is connected to the pulley casing using the clamping set (the shaft can thus be easily replaced) RAL-paint according to customer requirements <p>Additional applications:</p> <ul style="list-style-type: none"> Acceleration belts for automatic sorting systems Kink belt conveyor designs Sorting conveyors, reversible and movable belt conveyors are possible 	<ul style="list-style-type: none"> Extremely robust chain belt conveyors for a wide range of applications For example as a feeding belt for the press, an underfloor conveyor belt, an infeed belt for the recycling industry for loose or baled goods, already fitted with a M112 chain as standard to ensure a long life cycle Bolted tread rails on massive cross beams, which are adapted to the modular base frame design, allow for fast inspection work Very good accessibility due to large service hatches that allow for comfortable handling during cleaning and maintenance work The side ridges made of sheet steel are adapted to customer requirements Already in the standard design, the belt quality used EP 400/3 is oil and grease resistant The corresponding carrier versions are optimally selected according to the application, various belt gradients such as straight, bend, double bend and goose neck can be selected Can be used with appropriate side walls as material storage locations, bins and dosing devices 	<ul style="list-style-type: none"> Extremely robust steel-plate conveyor belts based on our chain belt conveyor technology for use as an infeed belt and a bin belt Advantages arise during use for heavy or sharp-edged material streams Plate material based on demand and according to customer requirements, for example galvanized, coated, steel, plastic, aluminium Already equipped with a M 112 chain and welded cover plate Can be used with appropriate side walls as material storage locations, bins and dosing devices
OPTIONS	OPTIONS	OPTIONS	OPTIONS
<ul style="list-style-type: none"> Inner and outer belt wipers Use of hard metal wipers, speed monitoring devices on the deflection rollers, electrically driven cleaning brushes Installation of neodymium or ferrite magnet Separator rollers Lower and upper belt guards Discharge chutes, inner belt and outer belt wipers according to customer requirements 	<ul style="list-style-type: none"> Inner and outer belt wipers Use of hard metal wipers, speed monitoring devices on the deflection rollers, electrically driven cleaning brushes Installation of neodymium or ferrite magnet Separator rollers Lower and upper belt guards Discharge chutes, inner belt and outer belt wipers according to customer requirements 	<ul style="list-style-type: none"> Vessel oiler Centralised lubrication units Sensor-controlled overload cut-off Electrically driven cleaning brushes Conveyor belts, rubber and PVC Discharge chutes Lower and upper belt guards Bin walls and bin ceilings depending on customer requirements 	<ul style="list-style-type: none"> Vessel oiler Centralised lubrication units Sensor-controlled overload cut-off Electrically driven cleaning brushes Discharge chutes Lower and upper belt guards depending on customer requirements



// INSTALLATION SITUATIONS OF OUR CONVEYOR TECHNOLOGY
UNDERFLOOR-VERSION

PRACTICALLY RECESSED

Benefits

The bulk material can be pushed directly onto the belt.
No device with a lifting shovel is required.

With the help of anchors and subframes, a base is created in the pit to be prepared by the customer in order to create a clean transition between the paved surface and the subsequent pit cover. This is a prerequisite for a safe and hazard-free transition. Poorly executed transitions can lead to collision and personal injury. It goes without saying that EUROPRESS Umwelttechnik also carries out this work according to customer requirements.



The conveyor technology can be expanded into a material store with an additional increase in the side walls. To fill the belt, a lifting device with a shovel or a grab is required.

In contrast to the underfloor version, this design is also available as a mobile solution.



Further information:
WWW.EUROPRESS-UMWELTECHNIK.DE



// SLIDING BELT CONVEYORS

Individually planable conveyor technology

Our sliding belt conveyors are suitable for a wide range of applications in the paper industry and in the recycling. They are ideal for conveying heavy, bulk materials with high throughput rates. Therefore, they are used in the recycling industry often as a sorting belt for downstream processes.

Sliding belt conveyors are ideal for horizontal or inclined conveyance. Depending on the conveying task, drivers in different designs can be installed on the rubber belt.



EQUIPMENT FEATURES

- Effective width from 300 to 2,800 mm
- Mounted via housing flange bearings
- Acceleration belts for automatic sorting systems
- Folding belt conveyors, sorting belts, reversing and moving belts possible
- RAL-paint according to customer requirements

TECHNICAL DATA

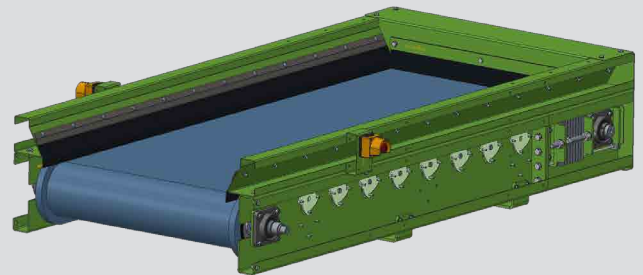
Effective width [mm]	300 - 2,800
Carriers	Height and gap variably
Tail of conveyor	Upper - or Underfloor
Belt	EP 400/3 2,5:0
Input power [kW]	as required
Conveying velocity [m/s]	0.3 - 0.7

Technical and design modifications reserved!

EQUIPMENT

Our conveyor belts are characterised by a stable frame construction. Thanks to a C-profile in the substructure, all our possibilities free, various changes in addition, cultivation possibilities to arrange. This profile makes it easy to assemble and disassemble all components on the conveyor belt. The frame construction is constructed as a modular design, so that the extension does not involve any major conversion work.

STABLE FRAME CONSTRUCTION



STABLE SIDE WALLS



Stable side walls are standard, in a profile frame construction for easy assembly and disassembly on the C-profile frame.
Side walls made of a 3mm thick frame with 5mm thick profiles for securing the C-profile.



Further information:
WWW.EUROPRESS-UMWELTECHNIK.DE

LATERAL BELT SEAL



A practical, lateral belt seal in screwed version. This sealing reduces the degree of contamination below the belt and prevents material from getting under the belt and causing misalignment.

Thanks to the bolted design, the rubber strip can be fitted and removed as quickly as possible

We place the drive drum according to your specific request. Shaft mounted geared motors are installed as standard. For the shaft-mounted gear unit version pedestal bearings with clamping sleeves are used.

This means that both the drum and the shaft can be replaced easily and separately if necessary.

The decisive factor is a large drum diameter for the greatest possible friction between drum and belt.

All points are adjustable independent of the position. Accordingly, the drive drum can be moved both in the conveying direction left and in the conveying direction right over a threaded rod can be adjusted. This makes all adjustment work easy to carry out and the belt is easily adjustable.

DRIVE DRUM





Both the drive as well as the deflector drums are equipped with clamping sleeves and continuous shafts, so that the shaft and the drums can be replaced separately.

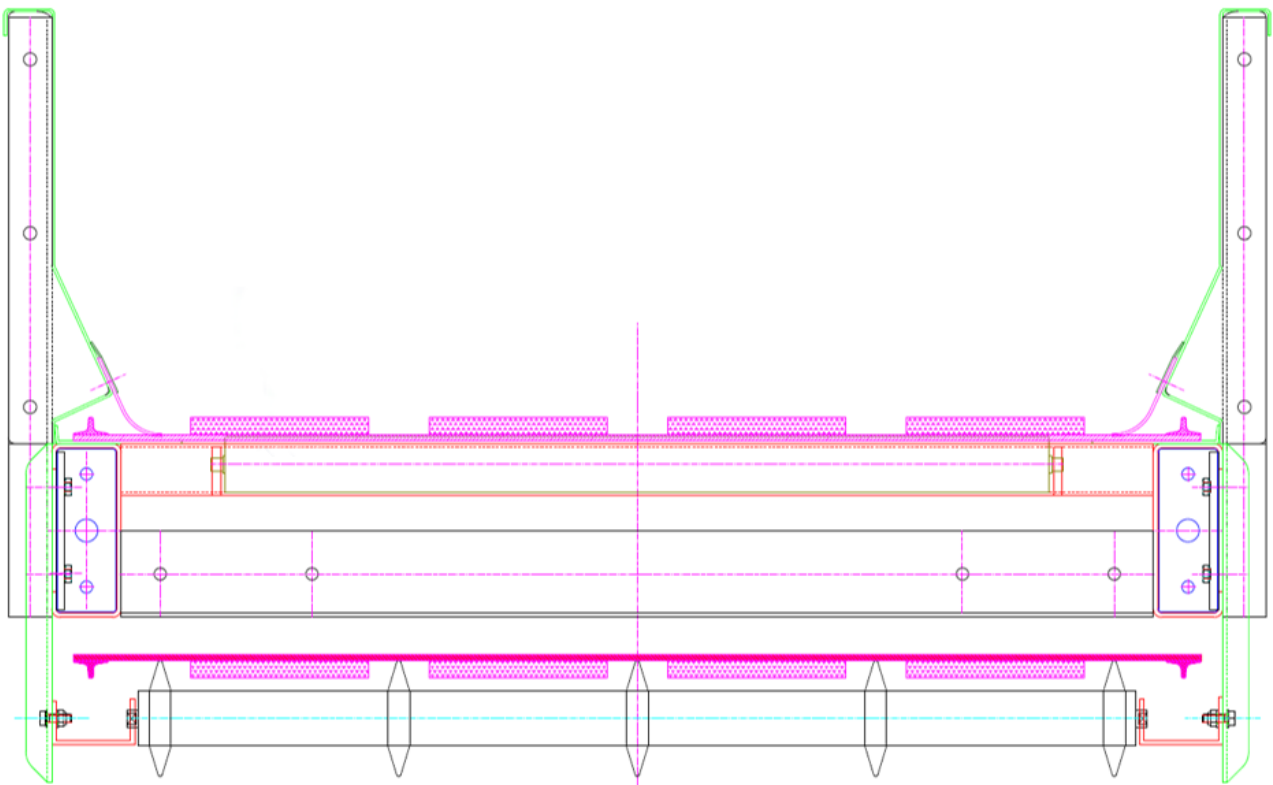
Long tensioning paths guarantee an optimum adjustment of the belt tension.

The special feature of the EUROPRESS sliding belt conveyors is that all components are very easy to assemble and disassemble.

Due to the C-profile modular principle, side walls as well as bottom flange rollers can be mounted variably.

Due to different sizes, different application situations can be implemented depending on the material composition and material weight.

Depending on the installation position, different material drivers are vulcanised onto the conveyor belt so that pitch angles of more than 30 ° can be achieved.



Further information:
WWW.EUROPRESS-UMWELTECHNIK.DE



// CHAIN BELT CONVEYOR

Everything on the chain

Our chain belt conveyors are outstandingly suitable for transporting loose and already-baled bulk material in different sizes, including large ones. Simple maintenance due to very good accessibility saves time and money. An underground version for operation without lifting bucket as well as an aboveground version with additional height increase of the side walls to store the material is available. In this version, the belt must be filled with a lifting bucket or similar lifting gear to supply baling presses, sorting systems and prechoppers.



EQUIPMENT FEATURES

- Effective widths from 600 to 2,800 mm
- Standard with M112 chain
- Screwed wear rails
- Assembly even under difficult spatial conditions

TECHNICAL DATA

Effective width [mm]	600 - 2,800
Chain	M112
Tail of conveyor	Upper- or Underfloor
Drive power	97 kW at 2.000 U/min
Belt	EP 400/3 4:3
Input power [kW]	as required
Conveying velocity [m/s]	0.3 - 0.7
Carriers	Height and gap variably

Technical and design modifications reserved!

EQUIPMENT

The local conditions, special applications and the material to be conveyed determine the selection of suitable conveying technology. On the question of whether there are economic reasons the mobile variant, the logistics costs are likely to be decisive. Either it is more cost-effective to transport the material on site or to transport it to a centre and process it in a more powerful plant.

MOBILE CHAIN BELT CONVEYORS



MOBILE CHAIN BELT CONVEYORS



In addition to costs, flexibility is crucial. Whether conveyor technology with hook holder or self-sufficient bulk material handling to be operated: EUROPRESS Umwelttechnik manufactures for them requirements, the corresponding economic solution.

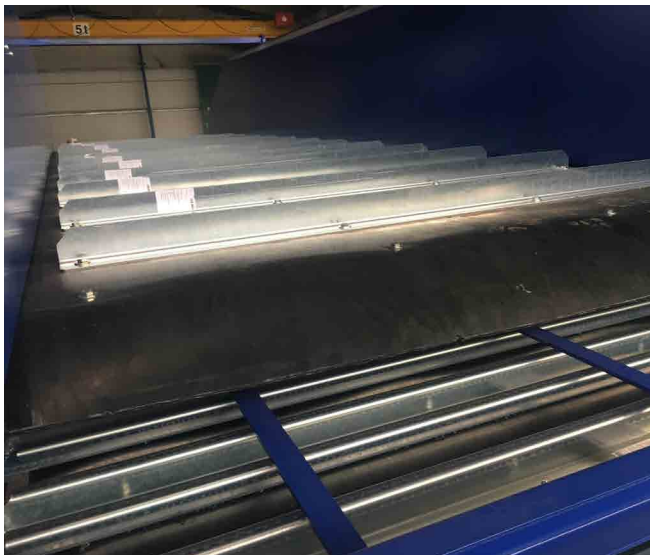


Further information:
WWW.EUROPRESS-UMWELTTECHNIK.DE

There are rails with bolted wear plates mounted.

Also in the bottom of the chain belt conveyor wear plates are installed.

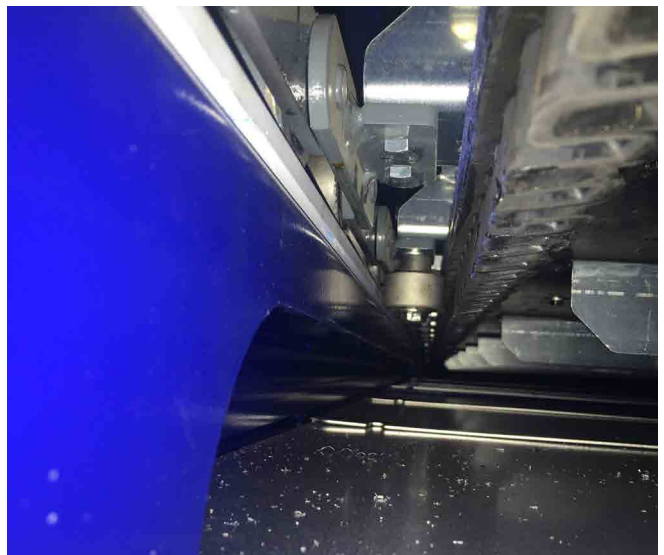
In the case of a technical design, a long service life and good accessibility are taken into account during an exchange.



Material driver and C-crossbeams in galvanized design. These ensure a long service life even under difficult conditions.

Belt guide rollers for straight running, instead of polyamides.

Optimal straight runout of the chain with a lateral guide roller, which rests in the lower run of the conveyor belt on the running rail and thus counteracts a misalignment.



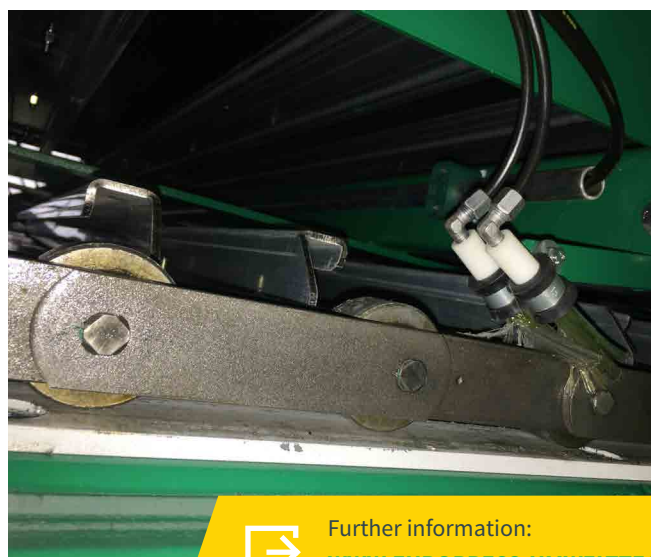
Bottom chord cover on complete length in galvanized design

The quick and easy disassembly of the components allows access to the chains and crossbeams in all positions.



Covering of the profile steel construction made of galvanized sheet metal - can be quickly dismantled

The chain is oiled with brushes using a standard pressure oiler. This is driven directly by the chains. This means that oiling can only be metered when the chain is moving.



Further information:
WWW.EUROPRESS-UMWELTTECHNIK.DE



// STEEL-PLATE CONVEYORS

Simply good under difficult conditions

For particularly heavy or sharp-edged conveyor materials, we implement extremely robust steel-plate conveyors based on our chain conveyor technology. The steel-plate material can be adjusted precisely to the respective needs. For example, steel, plastic or aluminium are available. The secure, smooth process is always at the focus. At the same time, we create the prerequisites for simple maintenance in order to offer an economically optimised solution.



EQUIPMENT FEATURES

- Effective widths from 300 to 2,800 mm
- Optionally available with central lubrication units
- On customer request, bottom and top chord covers

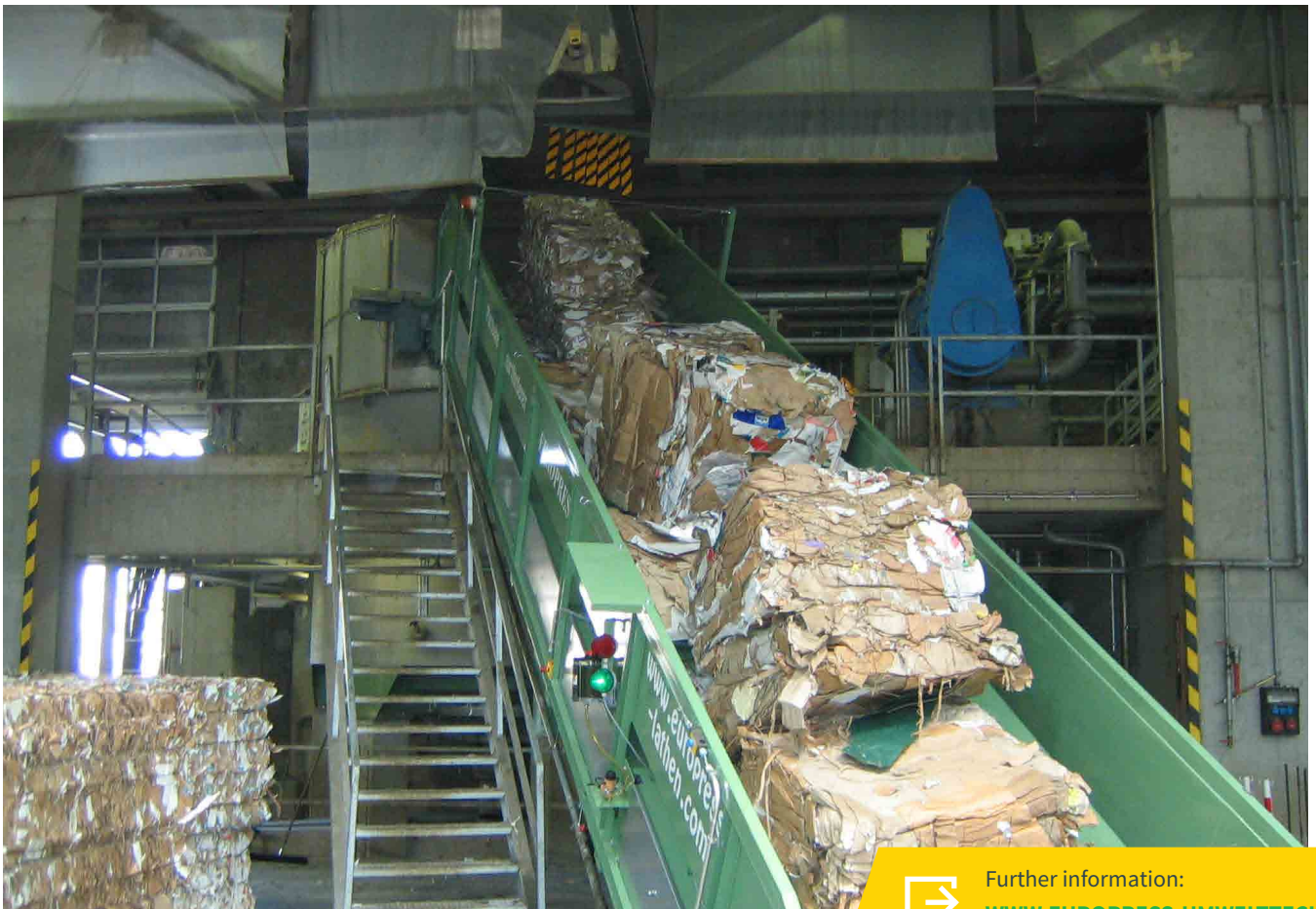
TECHNICAL DATA

Effective width [mm]	300 - 2,800
Chain	M112
Tail of conveyor	Under- and upperfloor
Quality of the plates	as required
Input power [kW]	as required
Conveying velocity [m/s]	0.3 - 0.7
Carriers	Height and Gap variably

Technical and design modifications reserved!

AS A BELT AND BUNKER

By default, these systems comprise an M112-chain, characterised by a long service life, and welded-on tabs. With the corresponding side walls, the system can also be used as a material storage or dosage unit. Optionally, the steel plate conveyors can be applied with a sensor-controlled overload deactivation to prevent damage and ensure even higher safety.



Further information:
WWW.EUROPRESS-UMWELTTECHNIK.DE



// DOSAGE UNIT AND MATERIAL BUNKER

Optimum feed increases productivity


EUROPRESS metering technology is used for intermediate storage and uniform rationing of the material to be compacted. This saves space and ensures continuous processes. An optimally dosed material quantity increases the throughput capacity of the press while minimizing downtimes. This significantly increases the overall productivity of the compaction process.



FOR NEW AND EXISTING PLANTS

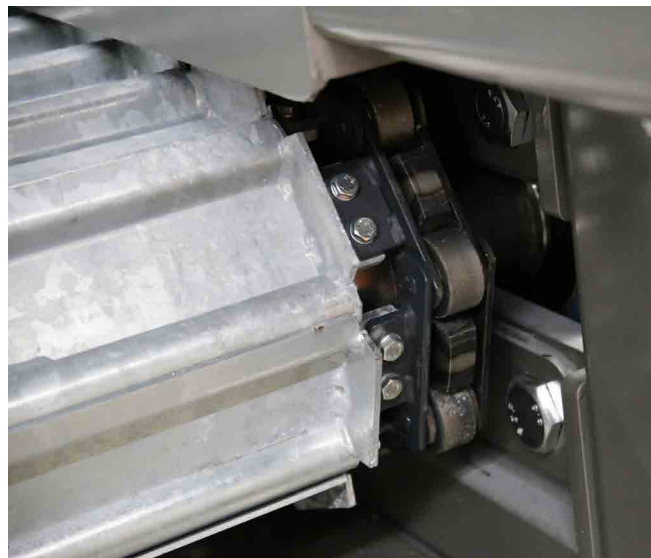
Our dosing units and material hoppers are highly robust but do not require high maintenance. An important element of the dosing hopper is the dosing roller, which efficiently allocates the material. The flexible hopper belt with freely selectable

conveying speeds ensures discharge. We manufacture components such as dosing rollers and dosing heads to customer specifications and install them professionally.



Robust plate belt conveyor belts based on chain belt technology.

Drive plates in hot-dip galvanized design ensure a long service life.



Further information:
WWW.EUROPRESS-UMWELTECHNIK.DE



// SORTING SYSTEMS

Automated procedure at high efficiency

BETTER SEPARATE

The EUROPRESS sorting systems have the task of sorting mixed material flows by type quickly and reliably. The usually time-consuming and less precise manual sorting at the conveyor belt is no longer necessary. It is replaced by a highly efficient automated procedure. Our highly modern sorting systems separate, among others, paper, light-weight packaging, plastics, mixed construction waste, wood residues and metals.

The sorters are particularly often used for unfiltered household waste that is made up of many different waste products. A throughput of up to 100,000 tons of household waste per year characterises our systems as particularly high-performance and productive.

Throughput is implemented according to the customer's wish. Europress acts as general contractor for the customer and coordinates interfaces between the individual sorting units as well.



Further information:
WWW.EUROPRESS-UMWELTTECHNIK.DE

EUROPRESS Umwelttechnik GmbH
Von-Arenberg-Str. 1
49762 Lathen

Tel.: +49 5933 92467-0

Fax: +49 5933 92467-50

eMail: info@europress-umwelttechnik.de



Weitere Informationen:

WWW.EUROPRESS-UMWELTECHNIK.DE

